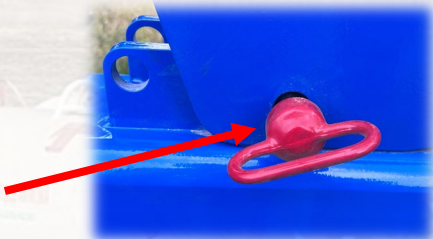


## TR 440 Unfolding

- Remove wing lock pins



- Unfold Inner Wings, then slightly raise to remove pressure on Wing Casters



- Fully Unfold Casters Wheels and Outer Wings
- Engage constant flow to Inner Wing Down Pressure

Inner Wing  
Down Pressure initially  
set to 600-700 PSI

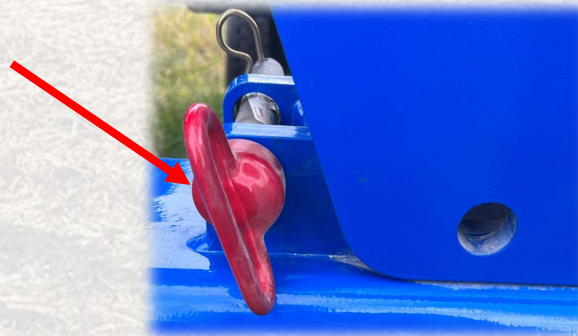


## TR 440 Folding

- Slightly raise Inner Wings to remove Pressure on Wing Casters



- Fully fold Outer Wings and Wing Caster Wheels
- Fold Inner Wings
- Install Wing Lock Pins

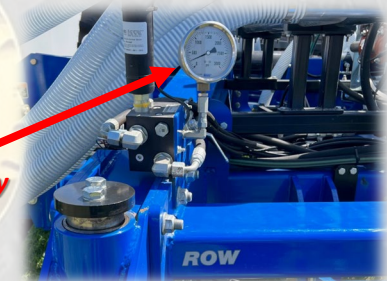


[www.agsynergy.com](http://www.agsynergy.com) 785-336-6333

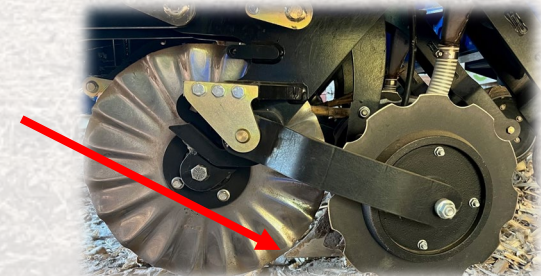
## Genesis RAZER Initial Field Settings

- Ensure constant flow (600-700 PSI initially) to Inner Wing Down Pressure
- Ensure constant flow to Row Unit Down Pressure

Row Unit  
Down Pressure initially  
set to 800-1200 PSI



- Ensure 1/8" - 1/4" clearance between coulter and knife





## Genesis RAZER In Field Adjustment

- To Change Application Depth, use the pin located at the front of the gauge wheel arm



- To adjust Coultter-Knife clearance use the knife holder adjustment bolt. Clockwise to decrease, counterclockwise to increase. Optimal clearance is 1/8" - 1/4"

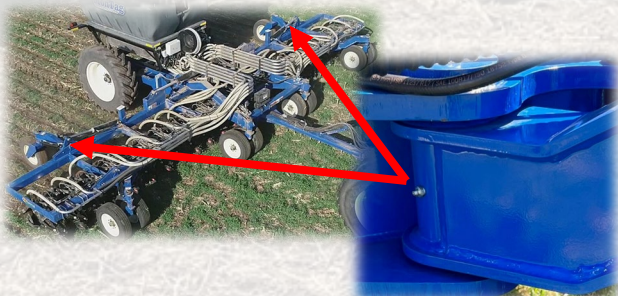


## Daily Maintenance

- Grease front (4) and rear (2) vertical caster shafts



- Outer Wing rear caster folding pins

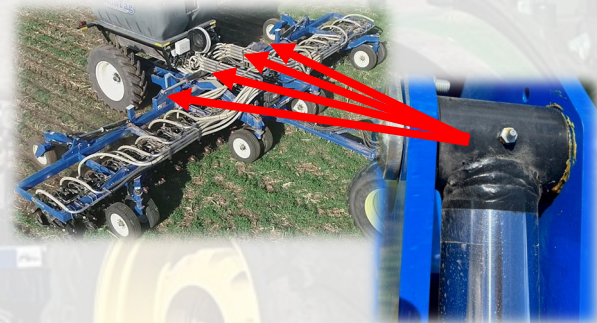


- Grease horizontal cart shaft

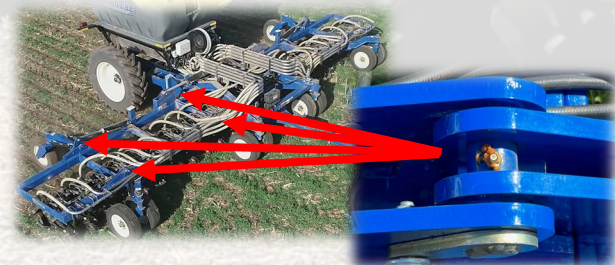


## 40 Hr. Maintenance

- Grease inner wing cylinder pins (4)



- Grease Inner Wing (4) and Outer Wing (4) Pivot Pins



- Grease Bull Pull Pin Collar

